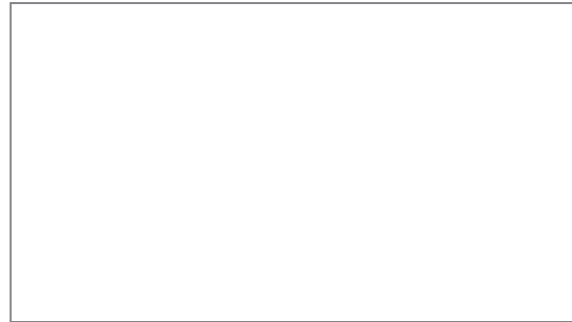


Hanamint Corporation

www.hanamint.com

Your authorized Hanamint dealer is:



Hanamint[®]

**2023-2024
Collections**





Hanamint®

Hanamint 2024 Collections

Hanamint is pleased to introduce the collections for 2024. As a leader in the casual furniture industry, our team of creative designers and craftsmen strive to bring you collections of exceptional quality and value.

These collections of our proven best sellers are sure to enhance the beauty of any outdoor room and provide years of enjoyment.

With over 30 years of experience in the outdoor market, we pledge to continue our strong commitment to quality, outstanding craftsmanship, and the highest standard of customer service.



**ISO 9001:2008
CERTIFIED FACTORY**



CEDAR

Warehouse Finish: Black
Cushion Fabric: 4043300
Carlisle Tables recommended

Dining Chair
309111

Carlisle 44" x 71" Rectangular Table
722845



CEDAR

Warehouse Finish: Black
Cushion Fabric: 4043300
Carlisle Tables recommended

CEDAR COLLECTION



Dining Chair
309111



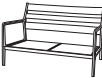
Swivel Rocker
309341



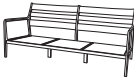
Club Chair
309411



Club Swivel Rocker
309418



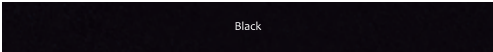
Loveseat
309421



Sofa
309431



Ottoman
309451



Black



CEDAR SLING & CARLISLE TABLES

Warehouse Finish: Black
Sling: 5928044

CEDAR SLING COLLECTION & CARLISLE TABLES



Dining Chair
309112



Swivel Rocker
309342



42" x 76" Rectangular Extension Table,
Expands to 100"
722099



44" x 71" Rectangular Table
722845



48" Round Table
722548



22" Square
End Table
722622



30" x 52" Rectangular
Coffee Table
722765



37" x 49" Rectangular
Enclosed Gas Fire Pit Table
722090

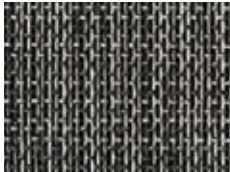


36" Square Pedestal Counter
Height Table - 37" High
722043

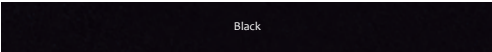
36" Square Pedestal Bar Table - 41" High
722053



Augustine Silver
5928044



Augustine Shadow
5928067



Black



CLAYTON SLING

Warehouse Finish: Desert Bronze
Sling: 5928033
Mayfair Tables recommended

CLAYTON SLING COLLECTION



Dining Chair
299132



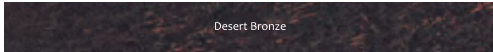
Swivel Rocker
299342



Chaise Lounge
299336



Augustine Fennel
5928033



Desert Bronze

MAYFAIR

Warehouse Finish: Desert Bronze
Cushion Fabric: 5609400

Dining Chair
208141

Swivel Rocker
208341

42" x 76" Rectangular Extension Table, Expands to 100"
208081



MAYFAIR

Warehouse Finish: Desert Bronze
Cushion Fabric: 4045600

- Estate Club Chair
208411
- Estate Club Swivel Rocker
208415
- Estate Club Left Chair
208441
- Estate Club Right Chair
208443
- 24" Square End Table
208624
- 26" x 48" Rectangular Coffee Table
208763



MAYFAIR
COLLECTION

Desert Bronze



Dining Chair
208141



Swivel Rocker
208341



Swivel Counter Height Stool
208353



Swivel Bar Stool
208351



Chaise Lounge
208331



Estate Club Chair
208411



Estate Club Swivel Rocker
208415



Estate Club Swivel Glider
208419



Estate Ottoman
208451



Estate Club Right Chair
208443



Estate Club Middle Chair
208445



Estate Club Left Chair
208441



Estate Club Corner Chair
208447



42" Round Coffee Table
208542



48" Round Table
208548
54" Round Inlaid Lazy Susan Table
208084



42" x 76" Rectangular Extension Table,
Expands to 100"
208081
42" x 84" Rectangular Table
208827



24" Round Tea Table
208524



24" Square End Table
208624



26" x 48" Rectangular Coffee Table
208763



20" Round Ice Bucket Side Table
208010



22" x 32" Rectangular
Ice Bucket Table for Estate Sectional
208011



22" x 28" Rectangular
Counter Height Table
208741



39" x 52" Oval Enclosed Gas Fire Pit Table
208091



16" x 38" Console Table
611806



Tea Cart
613208



54" Round Counter Height
Enclosed Gas Fire Pit Table
208096



30" Round Pedestal
Counter Height Table - 37" High
208032
30" Round Pedestal
Bar Table - 41" High
208042



SANTA BARBARA

Warehouse Finish: Terra Mist
Cushion Fabric: 5407000
New Classic Tables recommended

Full Cushion Dining Chair
704117
Full Cushion Swivel Rocker
704347
New Classic 42" x 76" Rectangular Extension Table, Expands to 100"
711081



SANTA BARBARA

Warehouse Finish: Terra Mist
Cushion Fabric: 4042800
New Classic Tables recommended

Dining Chair
704116
Swivel Rocker
704346
New Classic 48" Round Table
711548





SANTA BARBARA

Warehouse Finish: Terra Mist
Cushion Fabric: 4045600
New Classic Tables recommended

Club Chair
704411
Club Swivel Rocker
704417
Loveseat
704421
New Classic 24" Square End Table
711624
New Classic 28" x 48" Rectangular Coffee Table
711763



SANTA BARBARA COLLECTION

Terra Mist



Dining Chair
704116



Swivel Rocker
704346



Full Cushion Dining Chair
704117



Full Cushion Swivel Rocker
704347



Ottoman
704453



Club Chair
704411



Club Swivel Rocker
704417



Chaise Lounge
704331



Loveseat
704421



Loveseat Glider
704428



Sofa
704431

NEW CLASSIC TABLES

Terra Mist



12" x 18" Tea Table
618



24" Round Tea Table
711524



28" x 48" Rectangular Coffee Table
711763



24" Square End Table
711624



20" Round Ice Bucket Side Table
703010



48" Round Enclosed Gas Fire Pit Table
703091



42" x 84" Oval Table
711927



42" x 76" Rectangular Extension Table, Expands to 100"
711081



48" Round Table
711548
54" Round Inlaid Lazy Susan Table
711084



42" Round Counter Height Table - 37" High
711035

42" Round Bar Table - 41" High
711600

SOMERSET

Warehouse Finish: Terra Mist
Cushion Fabric: 4809300
Sherwood Tables recommended

Dining Chair
724113
Sherwood 44" Square Table
245644



SOMERSET

Warehouse Finish: Terra Mist
Cushion Fabric: 4808000
Sherwood Tables recommended

SOMERSET COLLECTION



Dining Chair
724113



Swivel Rocker
724343



Estate Club Chair
724111



Estate Club Swivel Rocker
724418



Chaise Lounge
724331



Estate Ottoman
724451



Estate Loveseat
724421



Estate Sofa
724431

Terra Mist





STRATFORD

Warehouse Finish: Terra Mist
Cushion Fabric: 4045600
Sherwood Tables recommended

Dining Chair
247141
Swivel Rocker
247341
Sherwood 44" x 84" Rectangular Table
245847



STRATFORD

Warehouse Finish: Terra Mist
Cushion Fabric: 4809300
Sherwood Tables recommended

STRATFORD COLLECTION

- | | | |
|--|--|---|
| 
Dining Chair
247141 | 
Swivel Rocker
247341 | 
Chaise Lounge
247331 |
| 
Swivel Counter Height Stool
247353 | 
Swivel Bar Stool
247351 | 
Estate Ottoman
247451 |
| 
Estate Club Chair
247412 | 
Estate Club Swivel Rocker
247417 | 
Estate Club Corner Chair
247447 |
| 
Estate Club Right Chair
247444 | 
Estate Club Middle Chair
247445 | 
Estate Club Left Chair
247442 |

Terra Mist



STRATFORD SLING

Warehouse Finish: Terra Mist
Sling: 5928048
Sherwood Tables recommended

STRATFORD SLING COLLECTION



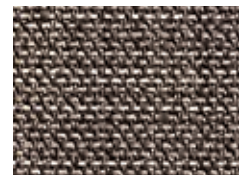
Dining Chair
247142



Swivel Rocker
247342



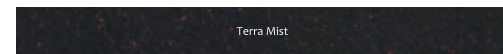
Chaise Lounge
247336



Augustine Gravel
5928007



Augustine Pewter
5928048



STOOLS & BENCHES



Counter Stool
263355



Bar Stool
263315



Sherwood 16" x 70" Bench
245245



Bench
263215

SHERWOOD TABLES

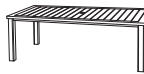
Terra Mist



44" Square Table - 29" High
245644

36" Square Counter Height Table - 37" High
245637

36" Square Bar Table - 41" High
245063



44" x 68" Rectangular Table
245845

44" x 84" Rectangular Table
245847



24" Square Ice Bucket
Side Table
245010



16" x 18" Rectangular
Tea Table
245711



24" Square End Table
245624



24" x 48" Rectangular
Coffee Table
245743



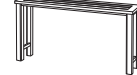
Hexagonal Enclosed
Gas Fire Pit Table
245091



39" x 56" Rectangular
Enclosed Gas Fire Pit Table
245090



47" x 64" Rect. Counter Height
Enclosed Gas Fire Pit Table
245098



16" x 70" Counter Height
Console Table
245715





TUSCANY

Warehouse Finish: Desert Bronze
Cushion Fabric: 4042800

Dining Chair
018130
Hexagonal Inlaid Lazy Susan Table
018067



TUSCANY COLLECTION

Desert Bronze



Dining Chair
018130



Swivel Rocker
018240



Bench
018140



Chaise Lounge
018300



Swivel Counter Height Stool
018280
Swivel Bar Stool
018250



48" Round Table
018450
54" Round Inlaid Lazy Susan Table
018480



Hexagonal Inlaid Lazy Susan Table
018067



42" x 76" Rectangular
Extension Table, Expands to 100"
018081



42" x 90" Rectangular Table
068590



30" Round Umbrella Side Table - 18" High
018670



30" Round Pedestal Table - 29" High
018410
30" Round Pedestal Counter Height Table - 37" High
018062



30" Round Pedestal Bar Table - 41" High
018690



42" Round Pedestal Table - 29" High
018400



42" Round Pedestal Bar Table - 41" High
018600



21" Round Tea Table
018620



21" Square End Table
048610



21" x 42" Rectangular
Coffee Table
048630



Tea Cart
613118



20" Round
Ice Bucket Side Table
018010



20" x 28" Rectangular
Ice Bucket Table
018011



48" Round
Enclosed Gas Fire Pit Table
048091



Towel Rack
611401



16" x 36" Rectangular
Console Table
611803



Baker's Rack
611703



Storage Box
611948



82" Party Bar
613802



GRAND TUSCANY

Warehouse Finish: Desert Bronze
Cushion Fabric: 4045600

GRAND TUSCANY COLLECTION



Club Chair
048412



Club Swivel Rocker
048410



Loveseat
048422



Ottoman
048452



Sofa
048432

Desert Bronze

WESTFIELD

Warehouse Finish: Black
Cushion Fabric: 4043300
Carlisle Tables recommended

Dining Chair
248141

Swivel Rocker
248341

Carlisle 42" x 76" Rectangular Extension Table, Expands to 100"
722099





WESTFIELD

Warehouse Finish: Black
Cushion Fabric: 5476000
Carlisle Tables recommended

WESTFIELD COLLECTION



Dining Chair
248141



Swivel Rocker
248341



Bench
248211



Swivel Counter Height Stool
248353



Swivel Bar Stool
248351



Chaise Lounge
248331



Club Chair
248411



Club Swivel Rocker
248417



Ottoman
248451



Loveseat
248421



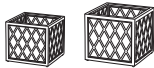
Sofa
248431

Black

LATTICE PLANTERS



Terra Mist



2 Pack Planters (1-18" & 1-24")
611005



18" x 36" Rectangular Planter
611215



18" Small Square Planter
611213

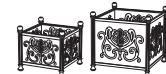


24" Large Square Planter
611214

TUSCANY PLANTERS



Desert Bronze



2 Pack Planters (1-18" & 1-24")
611004



18" x 36" Rectangular Planter
611212



18" Small Square Planter
611210



24" Large Square Planter
611211

PALM PLANTERS



Black



2 Pack Planters (1-18" & 1-24")
611006



18" Small Square Planter
611220



24" Large Square Planter
611221

TRASH RECEPTACLES



Terra Mist



Newport Trash Receptacle With Liner -
Fully Welded
604011



Tuscan Trash Receptacle With Liner -
Fully Welded
604012



Desert Bronze

FIRE PIT ACCESSORIES



Round Fire Burner Kit
616615



Rectangular Fire Burner Kit
616617



Round Glass Guard
616619



Rectangular Glass Guard
616621



NG Conversion Kit
616690



Amber Fire Glass
616622



Black Fire Glass
616623



Clear Fire Glass
616624



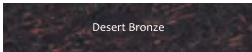
UMBRELLA BASES



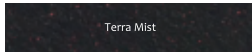
Tuscany Alumiron®
Umbrella Base (50LB)
671548



Alumiron®
Umbrella Base (50LB)
671550



Desert Bronze



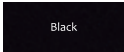
Terra Mist



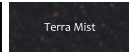
Ventura Cast Iron
Umbrella Base (30LB)
672301



30 LB Add on Weight (Cast Iron)
672301



Black



Terra Mist



Alumiron® Base Bottom

Hanamint's original Alumiron® bases ensure your umbrella bases will never rust. The cast iron weight in this base has been covered with a rust proof cast aluminum decorative shell. These beautifully crafted, original designs are perfect compliments to Hanamint's collections.

CUSHION FABRICS



HANAMINT CONSUMER LIMITED WARRANTY

Hanamint Corporation, Inc. ("Hanamint") warrants to the original retail purchaser of Hanamint branded items that in the event the furniture frame fails structurally, other than as the result of abuse or improper use, within ten (10) years from the date of purchase, Hanamint will, at its sole option, replace the part, repair the frame or replace the entire item. Replacement will be in the original color and style whenever possible; however, equal value replacement will be offered in the event that the original color or style are, for any reason, unavailable. In the event that a defective item is repaired or replaced by Hanamint pursuant to this warranty, the warranty period for the repaired or replacement item shall run from the date of purchase of the original item. Hanamint warrants the powder coat finish against peeling and blistering (but not against fading and wear, as these may be expected due to the nature of hand-applied finishes) for three (3) years from the date of purchase. Some aspects of the Hanamint finishes are hand-applied and some variation in these finishes must be expected and is normal; normal variations in finishes shall not be considered defects and are not covered under this limited warranty. The warranty period for cushions, sling fabrics, gas fire bowls, fire-pit accessories and other component parts is one (1) year from date of purchase. This limited warranty does not cover damage to fire pits due to excessive heat.

This limited warranty applies to residential use only and only to the original retail purchaser of the product and is not transferable. This limited warranty does not apply to products that are sold "as is" or without warranty (whether or not labeled as such), nor to products sold under terms, e.g., "all sales final" or similar language, that do not allow returns or refunds by the retail buyer to the retail seller. Hanamint does not warrant against damage or failure resulting from acts of nature, commercial use, normal wear and tear, chipping, fading, exposure to harsh chemicals or solvents, abuse, freeze damage, glass breakage or failure to take reasonable care of the furniture. Hanamint shall not be liable for transit damage to the retail buyer's location. If requested by Hanamint, product(s) must be returned to Hanamint for inspection or a photograph provided to Hanamint or its authorized representative, when requesting warranty parts, warranty replacement or warranty repair. Hanamint shall not be liable for shipping charges either to or from its warehouse on merchandise returned after twelve (12) months from the date of purchase.

Obtaining Warranty Service: To obtain warranty service, you must contact the retailer where the furniture was originally purchased within the relevant warranty period and provide a copy of your dated register receipt as proof of purchase. The receipt or other proof of purchase must be complete and legible with no alterations or cross outs. All warranty issues must be handled through the retailer from which the furniture was originally purchased. Original proof of purchase must accompany all warranty claims.

This warranty is the exclusive statement of your rights with respect to the defects in the items you have purchased and supersedes any other express warranty or statement, written or oral, made in connection with the purchase and sale of such items. Some states do not allow exclusion or limitation of incidental or consequential damages, so these limitations may not apply to you. This warranty gives you specific legal rights and you may have other rights which vary from state to state.

For Care and Maintenance Instructions, go to www.hanamint.com